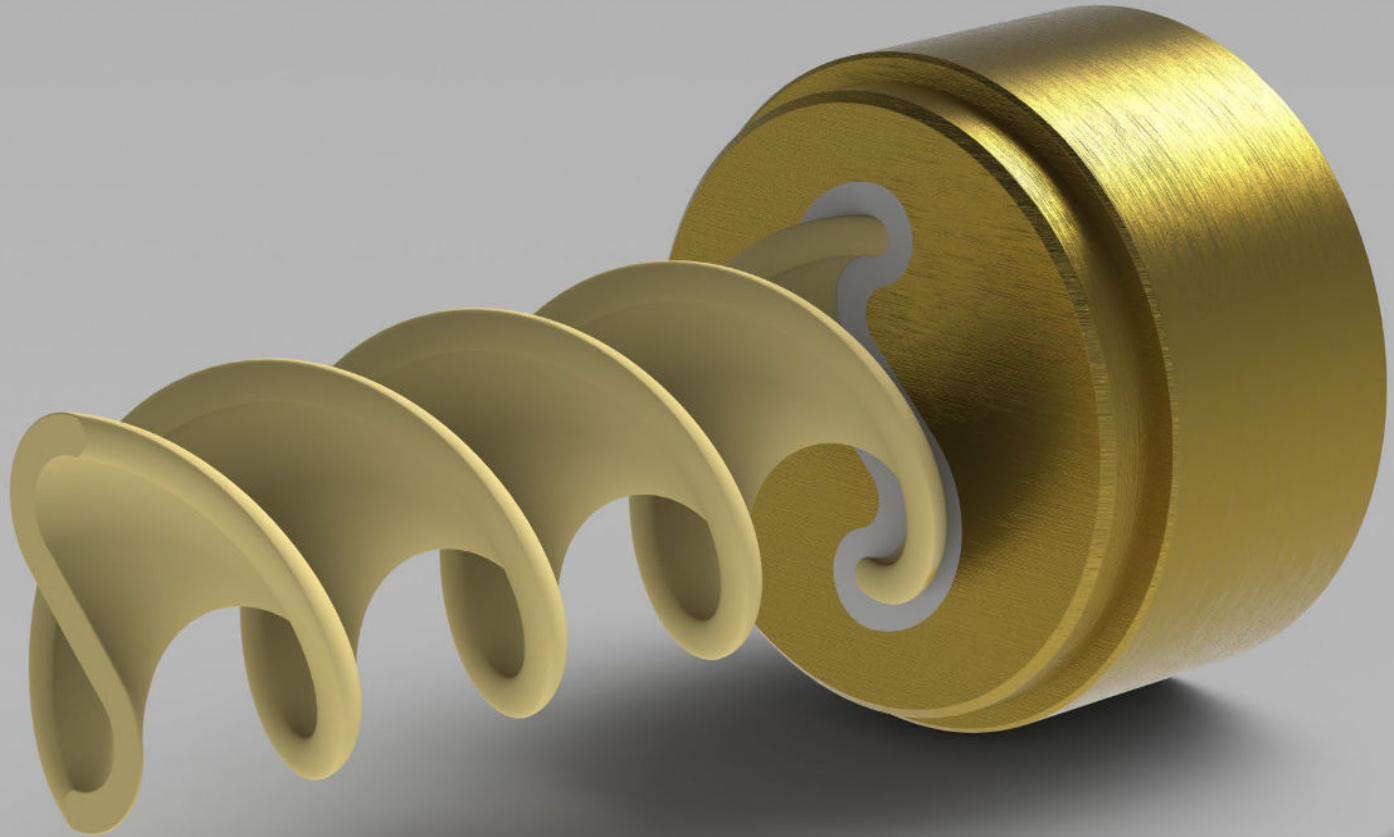


De Mari

Excellence in Extrusion

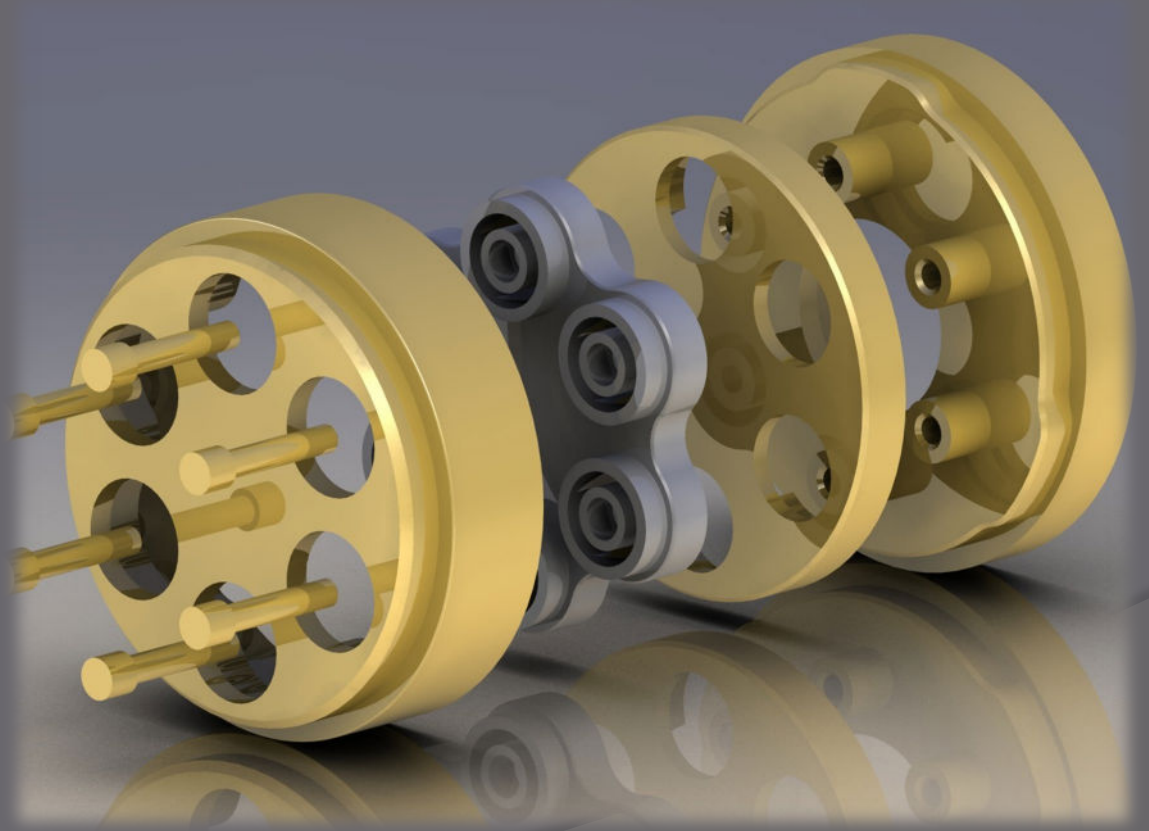


De Mari Lab
By Giovanni Cannata

De Mari

Excellence in Extrusion

Manufacturer of Extrusion Dies and Equipment for the Food Producing Community.



Excellence in Extrusion

Founded in 1997



Located 24 miles
north of Boston, MA
Dracut, MA

De Mari

Excellence in Extrusion

Oakmont Valley

Proud US Representatives for:



De Mari

Excellence in Extrusion

De Mari R&D Lab Consists of:

- Italtast Extruder & Drier
- Under Vacuum
- Head temperature and pressure controls
- Screw speed and knife speed controls
- Drier with moisture and temperature controls



De Mari

Excellence in Extrusion

What can the lab provide ?

Onsite Pasta Samples:

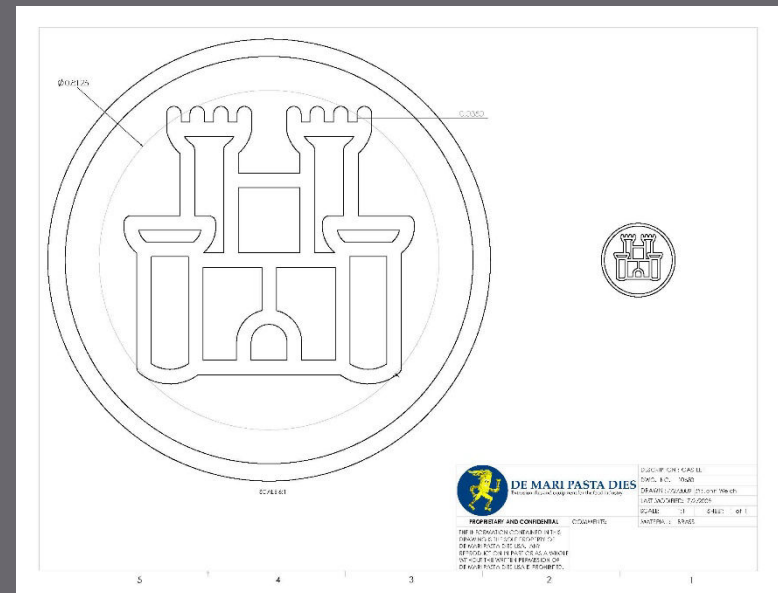
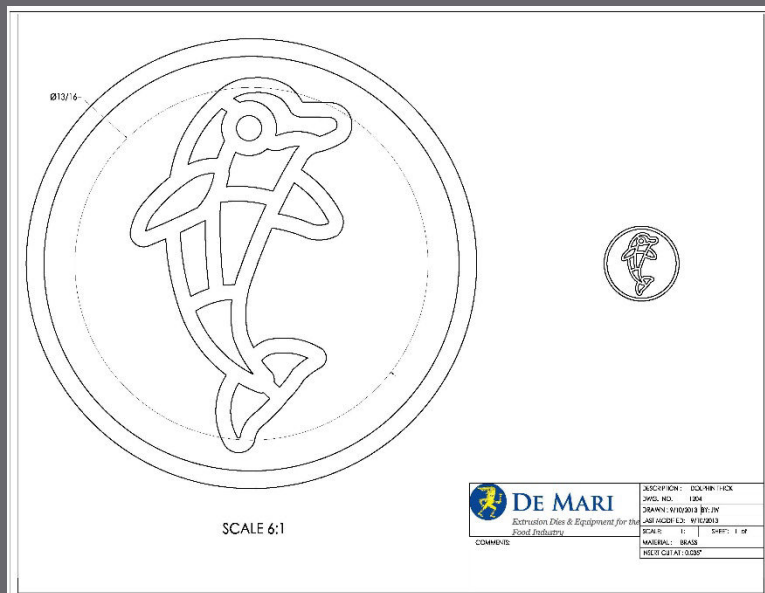
- Design and develop your next pasta shape as per your timeline or with our rapid method.
- Formulate for you any pasta shape from scratch and get it ready for industrial manufacturing.
- Adjust any pasta shape for better performance, better texture, decreased or increased cooking time, etc.
- Optimize any pasta formulations for better performance and cost savings.
- Accelerate your pasta developing time from 6-8-10 months to 2-3 weeks using our rapid method.



De Mari

Excellence in Extrusion

Rapid onsite changes to character shapes allows customers to leave with dry pasta samples, ready for evaluation. This will help plants avoid using production lines for evaluation and integrity of shapes. We can move lines, strengthen connections points and change thickness based on your exact formulation.



De Mari

Excellence in Extrusion



The new lab establishes De Mari as the industry's leader for end-to-end solutions and comprehensive manufacturing support. Moreover, it allows us to offer you the chance to keep all aspects of your new product development in-house, under one roof, *and* confidential!



Pasta 101 Training



- Understanding Durum wheat/Semolina
- Mixing
- Extrusion
- Drying Theory
- Moisture Profiles
- Dies and Inserts
- Screens and Blades
- Compensation Techniques
- Die and Insert Management
- Die Maintenance
- Product Measuring Tips and Techniques

De Mari

Excellence in Extrusion

Thank you,
Giovanni